



 **CONNECTEDSUITE™**
powered by THERMO KING

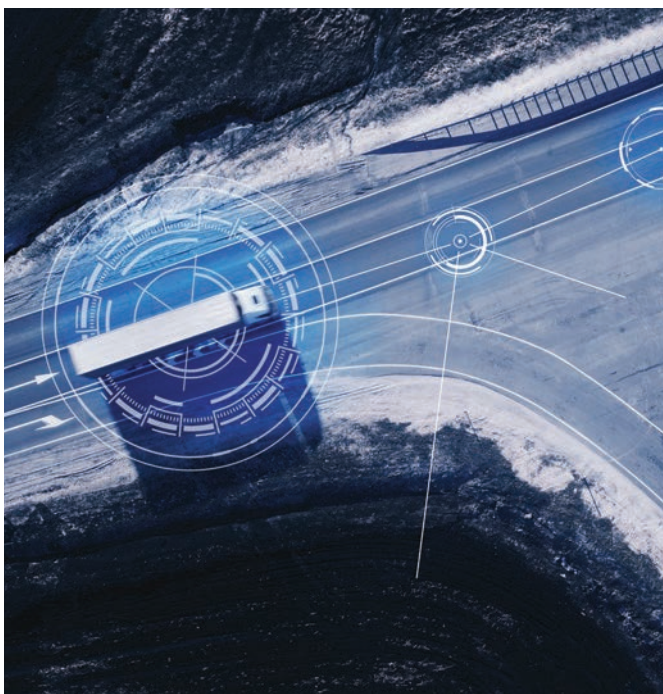
**Delivering smarter
fleet operations**

TRANE
TECHNOLOGIES™

Turning data into practical intelligence

ConnectedSuite is a complete bundle of Thermo King technology **designed to deliver information** that matters to you.

Putting this data to work gives you the ability to track and trace individual deliveries across your fleet. You'll be able to demonstrate temperature levels, meet regulatory requirements, and respond instantly to new challenges.



REAL-TIME CONNECTIVITY

Reefer Status

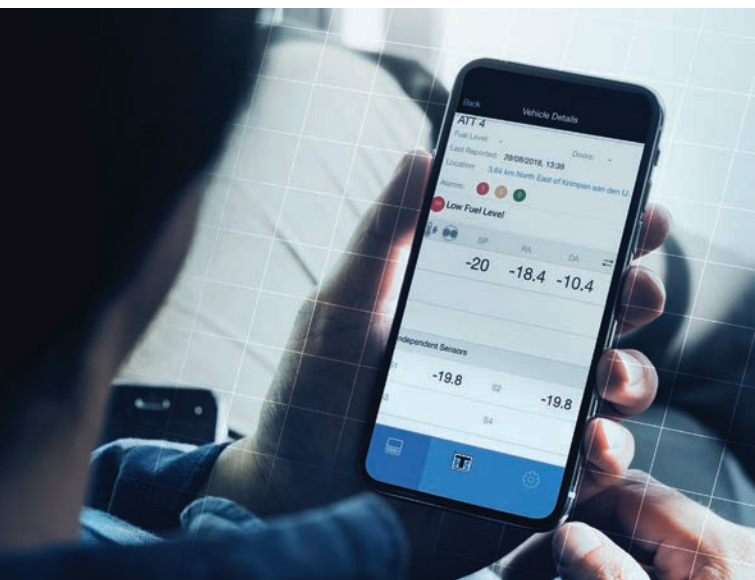
Is your unit on? What's the temperature set-point? Problems can emerge from even the most basic of reefer operations.

Load Condition

Keep an eye on the real temperature of individual loads in transit, rather than relying on the temperature set-point, to guarantee quality of delivery.

Asset Location

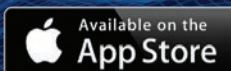
Monitor the current location of your assets at any time to ensure a quick and effective response to any emerging issue.



Go mobile

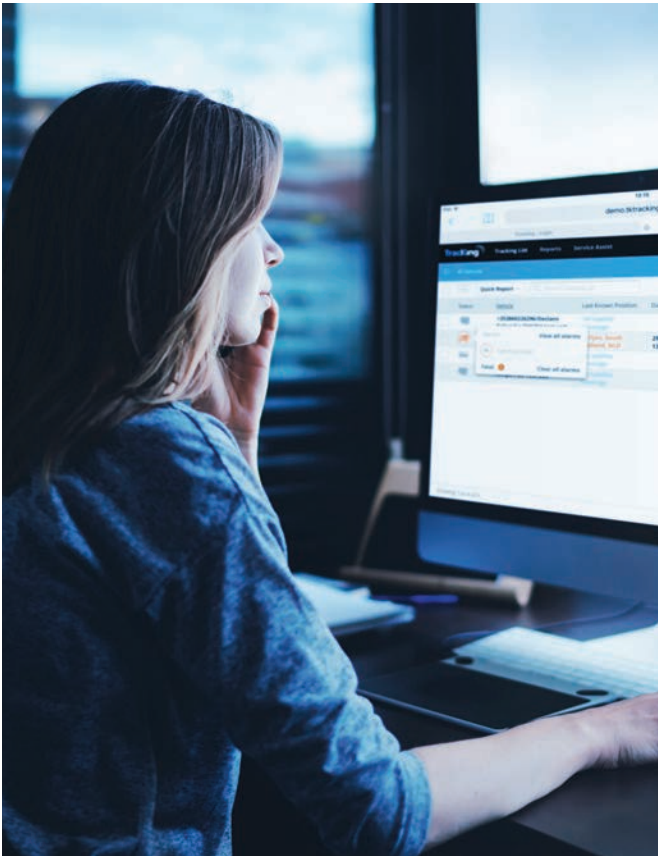
To help improve the level of real-time intelligence available to fleet managers on the condition of their refrigeration equipment, Thermo King has developed two apps to keep you connected to your assets: **TK Notify** and **TK Reefer**.

These apps are free and available to download from:



The advantages of data-driven fleet operations

The internet has fundamentally changed expectations and as a result, instant information has become the norm. The only way to access what you want in real-time is by fully embracing data-driven fleet operations. And that process starts with **ConnectedSuite**.



COMPLIANCE AND SECURITY

Temperature Compliance

Use temperature reports and graphs to prove that sensitive cargo was maintained at the desired temperature throughout every point in the journey.

Asset Security

With door sensor data available on the TracKing® platform, you can record all door openings to keep an eye on temperature and load security.

Cargo Traceability

Track shipment location and condition to know instantly when a delay occurs and to proactively manage exceptions.

LOWER COSTS

Vehicle Uptime

Eliminate unscheduled breakdowns and improve maintenance.

Fuel Usage

Maintain visibility to ensure the most fuel-efficient mode is consistently used when running loads.

Data is Everywhere

THERMOKING.COM/CONNECTED

As technology keeps changing, so do our offering of available modules. **Keep your fleets connected by consulting the list of ConnectedSuite assets found at thermoking.com/connected**

Tips and tricks to get the most out of ConnectedSuite



Fuel savings

Fleets can run in cycle-sentry mode to save fuel, increase engine off hours and extend reefer life.



Preparation is key

To improve asset uptime, the easiest thing to do is ensure all reefers are alarm free and fueled before starting a trip.



Speed up your response time

Improve on-time delivery by monitoring if a reefer unit is down with shutdown alarms, and track where the closest back-up trailer is located.



Lean fleet management

Monitoring reefer hours is the quickest way to identify both over-utilized and under-utilized reefers.



Instant notifications

Thanks to the TK Notify app, you can decide which events and alarms trigger a notification – complete with current trailer and cargo information.



Cover all your bases

Using temperature reports and graphs, you can prove the trailer was pre-cooled at the time of loading to the desired temperature.



Available to all

The telematics is factory fitted in all Thermo King Precedent units and available as an option (factory fitted or aftermarket) for truck units.

Elevate vehicle uptime

Every time a vehicle is off the road, it costs you money. Equally frustrating is the fact that the data is there to give you advance warning of any upcoming problem.

With ConnectedSuite and its fleet management tracking system, **this information is available in real-time on the TrackKing® platform.** TrackKing is a 4G LTE temperature and asset management system that gives you end-to-end visibility on different platforms. This technology delivers real-time and historical temperature data alongside fleet information – all to help you increase fleet efficiency and reduce the potential for cargo loss.

Better still, by monitoring usage and performance, you'll know the ideal time to bring in vehicles for servicing, thus boosting uptime and increasing the life expectancy of your equipment.





Optimizing fleet performance

Data can be put to work in many different ways. Think alternate route planning in reaction to traffic congestion, implementing more effective driver training, and detecting instances of fuel loss.

But equally, ConnectedSuite is about **helping you become more responsive**. Knowing immediately when a problem occurs, and to gain the visibility needed to initiate an effective response – enables your wider fleet to keep running while a repair is completed.

LEARN MORE ABOUT
CONNECTEDSUITE

Visit thermoking.com/connected to check out the latest updates and expansions.



Thermo King – by Trane Technologies (NYSE: TT), a global climate innovator – is a worldwide leader in sustainable transport temperature control solutions. Thermo King has been providing transport temperature control solutions for a variety of applications, including trailers, truck bodies, buses, air, shipboard containers and railway cars since 1938. For more information, visit thermoking.com or tranetechnologies.com.

